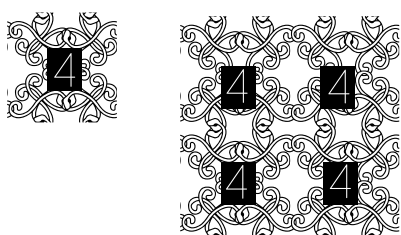


How to use this font for seamless patterns?

INSTALLING THE FONT:

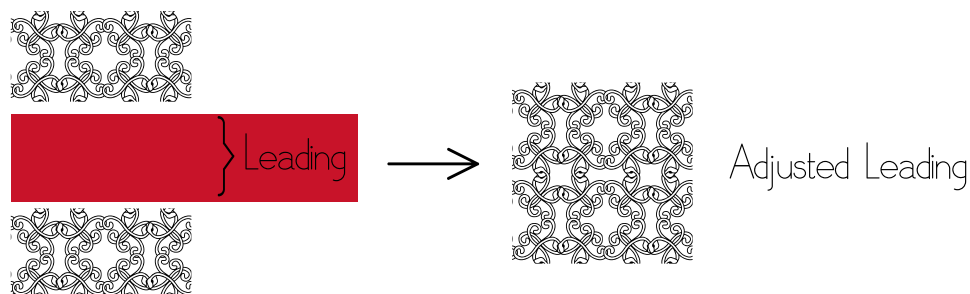
1. Close all programs
2. Unzip the downloaded package
3. Right click on the font file
4. The pop up will appear
5. From the pop up menu choose "INSTALL"
6. The computer installs the font on the system
7. The font is ready to use
8. Open Illustrator, Photoshop, Word etc. and have fun with Ivy Tiles :)

USING THE FONT:



If you are using Microsoft Word or similar application you are good to go after you type the letter associated with the pattern of your choice. The pattern will appear automatically. Please note that in Word etc. you will be able to produce simple (one layer) pattern, as Word and similar applications is unable to overlay patterns.

If you are using Adobe Illustrator or similar application it may happen that you will need to adjust the leading to the size when the lines will meet. Once this is done - interconnecting pattern will appear

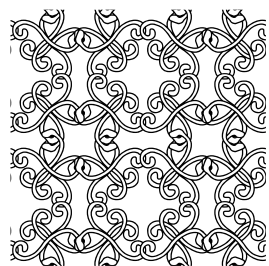


To make the most of this font follow those easy steps:

- After you have chosen the pattern and area you want to cover with it ensure that all samples you're going to work with are exactly the same size.
- Once this is done align patterns. If you prefer "flat look" align the two vertically and horizontally to the middle so the edges of the patterns fall in the same line. If you prefer "3D look" don't overlay them exactly to the middle. Instead manipulate the two until you are satisfied with the 3D effect image you're have just produced.

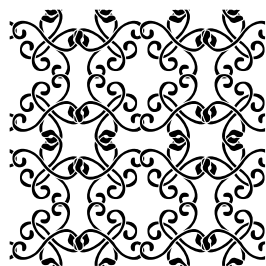
This font is available in three variants, that is: **FILL**, **OUTLINES** & **STENCIL**.

digit 4:



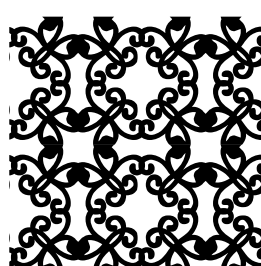
Outlines

digit 5:



Fill

digit 6:



Stencil